

Certificate of Analysis

Product Name: Ganoderma Lucidum Spores Polysaccharide
Batch Number: CLZ01-160802
Quantity: 28.9 kg

Manufacture Date: 2016-AUG-27
Testing Date: 2016-AUG-27
Expire Date: 2018-AUG-26
Shelf Life: 2 years

| ACTIVE INGREDIENTS | SPECIFICATION | METHOD | TEST RESULT |
|---------------------------------|-----------------------------|---|-------------|
| Total sugar content | ≥80.0% | UV H ₂ SO ₄ -Phenol Method | 97.34% |
| Mw | 3000-11000 | Chromatogram | 5680 |
| Weight Average Molecular Weight | | | |
| %TDA of part 1 | Mw (>9900), 6.0%-30.0% | Chromatogram | 15.36% |
| %TDA of part 2 | Mw (9900-1080), 67.0%-86.0% | Chromatogram | 81.8% |
| %TDA of part 3 | Mw (<1080), 1.0%-12.0% | Chromatogram | 2.84% |
| Mn | 1500-4000 | Chromatogram | 3033 |
| Number Average Molecular Weight | | | |
| PDI | ≤ 3.0 | Mw/Mn | 1.87 |
| Total proteins | ≤ 1.0% | Amino acid analysis Method | 0.37% |
| Monomer | Glucose | - | COMPLIES |

Technical Data:

Plant Informations From spores of *Ganoderma Lucidum* growing in China
Carrier % Used None
Preservative % Used None
Storage Store in ambient temperature. Protected from strong light and heat.
Packing Client's requirement.

| ITEM | SPECIFICATION | METHOD | TEST RESULT |
|----------------------|---|----------------------------------|-------------|
| Appearance | White to off-white powder | ORGANOLEPTIC | COMPLIES |
| Odor | A faint characteristic odor | ORGANOLEPTIC | COMPLIES |
| Loss on drying | ≤ 6.0% | CP2010 | 2.95% |
| Ash | ≤ 1.0% | CP2010 | 0.52% |
| pH | 6.2-7.2 | CP2010 | 6.21 |
| Heavy metals | ≤ 10 mg/kg | CP2010 | COMPLIES |
| Arsenic (As) | ≤ 1.0 mg/kg | ICP-MS | ND |
| Lead (Pb) | ≤ 1.0 mg/kg | ICP-MS | ND |
| Mercury (Hg) | ≤ 0.5 mg/kg | ICP-MS | ND |
| Residual solvents | Methanol ≤ 20 mg/kg Ethanol ≤ 1000 mg/kg | GC | COMPLIES |
| Transmittance | ≥65% | 1% Aqueous solution at 835 nm | 98.91% |
| MICROBIOLOGICAL TEST | | | |
| Total plate count | ≤ 1000 cfu/ g | CP2010 | 900 cfu/ g |
| Yeast and mold | ≤ 100 cfu/ g | CP2010 | <10 cfu/g |
| Coliforms | ≤ 10 cfu/ g | CP2010 | <10 cfu/g |
| E.Coli | Negative | CP2010 | COMPLIES |

QC

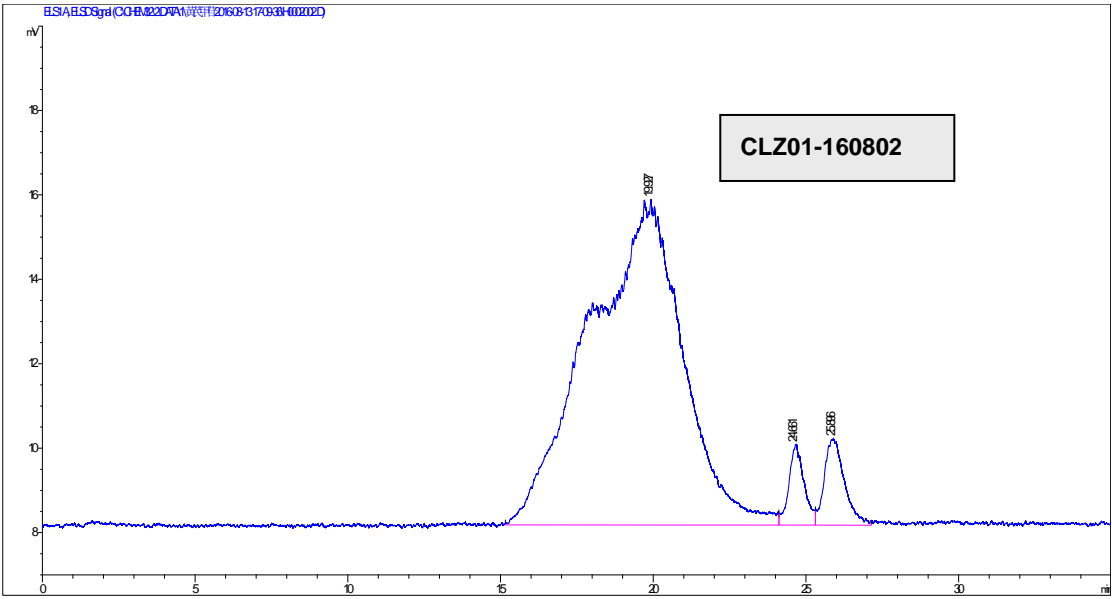
罗勇为

QA

郭传芳



GPC chromatograms



QC 罗勇为

QA 李传奇